



# HABITAT

YOUR HOLISTIC PARADISE

Wellness ♦ Anti-Ageing ♦ Conventions



Welcome to Habitat, our newest project on the north coast with unparalleled services and facilities





The visionary holistic concept combines modern life, wellness, activities and business





Find everything you need at our Street Mall (11.000 m<sup>2</sup> Commercial area)





Take a stroll on the Habitat Boulevard: 1.4 km landscaped road, surrounded by cascading waterfalls





Stay active at the indoor and outdoor sports facilities or on the designated bicycle and jogging lanes (total length: 3.5 km)





Explore the Kyrenia Mountains with hiking routes available directly from the side





Enjoy the new quality of lifestyle with a wide range of facilities







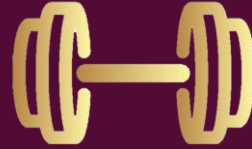




Spa



Wellness



Gym



Sauna



Steam Room



Yoga



Hiking



Cycling



Restaurant



Bar





## Health Center

(Polyclinic, Check-Up,  
Ambulance, Telemedicine,  
24/7 Emergency Care)



## Anti Ageing



## Pharmacy



## Bakery



## Caf  teria



## Pool



## Aquapark



## Supermarket

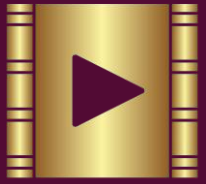


## ATM



## Shops





Cinema



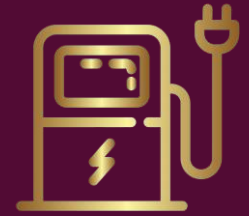
Tennis



Playground



Car Rental



Electric Car  
Charging



Shuttle Service



Onsite  
Management



Concierge  
Service



Laundry



Pet Friendly





# Habitat Conventions

- Convenient and well-equipped meeting rooms
- Bookable packages for different budgets
- Communal areas for networking and socialising
- Catering Service

Your solution for successful meetings and events

- Exhibitions
- Team Building Activities
- Product Launch
- And more...





# Project Overview

Total land area: 267.600 m<sup>2</sup>

Green area: 200.000 m<sup>2</sup>

Units: 1.453

Elevation:

Front of the project: 38m above sea level

Commercial zone: 44m above sea level

Middle of the project: 62m above sea level

Highest point: 90m above sea level



# Location



250 meters to the sea  
Daily Shuttle Service



Kyrenia: 37 mins  
Famagusta: 39 mins  
Nicosia: 45 mins  
Iskele: 31 mins



Ercan Airport: 45 mins  
Larnaca Airport: 1 hour 15 mins  
Paphos Airport: 2 hour 20 mins



Evergreen Office

Commercial Zone

Facilities Center

Bungalows

D-Block

1 Bedroom Garden

1 Bedroom Garden Corner

1 Bedroom Duplex Penthouse

2 Bedroom Duplex Penthouse

C-Block

2 Bedroom Garden Corner

3 Bedroom Duplex Penthouse

E-Block

1 Bedroom Garden

1 Bedroom Garden Corner

1 Bedroom Duplex Penthouse

2 Bedroom Duplex Penthouse

F-Block

Studio Garden

1 Bedroom Garden

1 Bedroom Duplex Penthouse





# F-Block

Studio Garden

1 Bedroom Garden

1 Bedroom Duplex Penthouse





# F-Block

## Studio Garden



43 m<sup>2</sup> covered area | 6 m<sup>2</sup> terrace | 49 m<sup>2</sup> total living space



# F-Block

## Studio Garden



43 m<sup>2</sup> covered area | 6 m<sup>2</sup> terrace | 49 m<sup>2</sup> total living space





# F-Block

## 1 Bedroom Garden



55 m<sup>2</sup> covered area | 24 m<sup>2</sup> terrace | 79 m<sup>2</sup> total living space



# F-Block

## 1 Bedroom Garden (Side)



55 m<sup>2</sup> covered area | 24 m<sup>2</sup> terrace | 79 m<sup>2</sup> total living space

All Pre-Planning Information provided in this document is subject to change and developer has the right to make any alterations / cancellations at the planning phase.



# F-Block

## 1 Bedroom Garden (Corner)



55 m<sup>2</sup> covered area | 24 m<sup>2</sup> terrace | 79 m<sup>2</sup> total living space





# F-Block

## 1 Bedroom Duplex Penthouse



60 m<sup>2</sup> covered area | 6 m<sup>2</sup> balcony | 30 m<sup>2</sup> roof terrace | 96 m<sup>2</sup> total living space



# F-Block

## 1 Bedroom Duplex Penthouse

1+1 (First floor)



1+1 (Gallery floor)



60 m<sup>2</sup> covered area | 6 m<sup>2</sup> balcony | 30 m<sup>2</sup> roof terrace | 96 m<sup>2</sup> total living space



# F-Block

## 1 Bedroom Duplex Penthouse

1+1 (First floor)



1+1 (Gallery floor)



60 m<sup>2</sup> covered area | 6 m<sup>2</sup> balcony | 30 m<sup>2</sup> roof terrace | 96 m<sup>2</sup> total living space

All Pre-Planning Information provided in this document is subject to change and developer has the right to make any alterations / cancellations at the planning phase.



# F-Block

## 1 Bedroom Duplex Penthouse

30 m<sup>2</sup> Rooftop Terrace with splendid views - Water & electric connections and summer kitchenette included



Enjoy the sun, charge your phone and invite your friends for a barbeque!



# D-Block

1 Bedroom Garden

1 Bedroom Duplex Penthouse

2 Bedroom Duplex Penthouse





# E-Block

1 Bedroom Garden

1 Bedroom Duplex Penthouse

2 Bedroom Duplex Penthouse





# D & E-Block

## 1 Bedroom Garden



50 m<sup>2</sup> covered area | 10 m<sup>2</sup> balcony | 60 m<sup>2</sup> total living space



# D & E-Block

## 1 Bedroom Garden



50 m<sup>2</sup> covered area | 10 m<sup>2</sup> balcony | 60 m<sup>2</sup> total living space

All Pre-Planning Information provided in this document is subject to change and developer has the right to make any alterations / cancellations at the planning phase.



# D & E-Block

## 1 Bedroom Duplex Penthouse



75 m<sup>2</sup> covered area | 8 m<sup>2</sup> balcony | 36 m<sup>2</sup> roof terrace | 119 m<sup>2</sup> total living space



# D & E-Block

## 1 Bedroom Duplex Penthouse

First Floor



Gallery Floor



75 m<sup>2</sup> covered area | 8 m<sup>2</sup> balcony | 36 m<sup>2</sup> roof terrace | 119 m<sup>2</sup> total living space

All Pre-Planning Information provided in this document is subject to change and developer has the right to make any alterations / cancellations at the planning phase.



# D & E-Block

## 1 Bedroom Duplex Penthouse

First Floor

Gallery Floor

75 m<sup>2</sup> covered area | 8 m<sup>2</sup> balcony | 36 m<sup>2</sup> roof terrace | 119 m<sup>2</sup> total living space

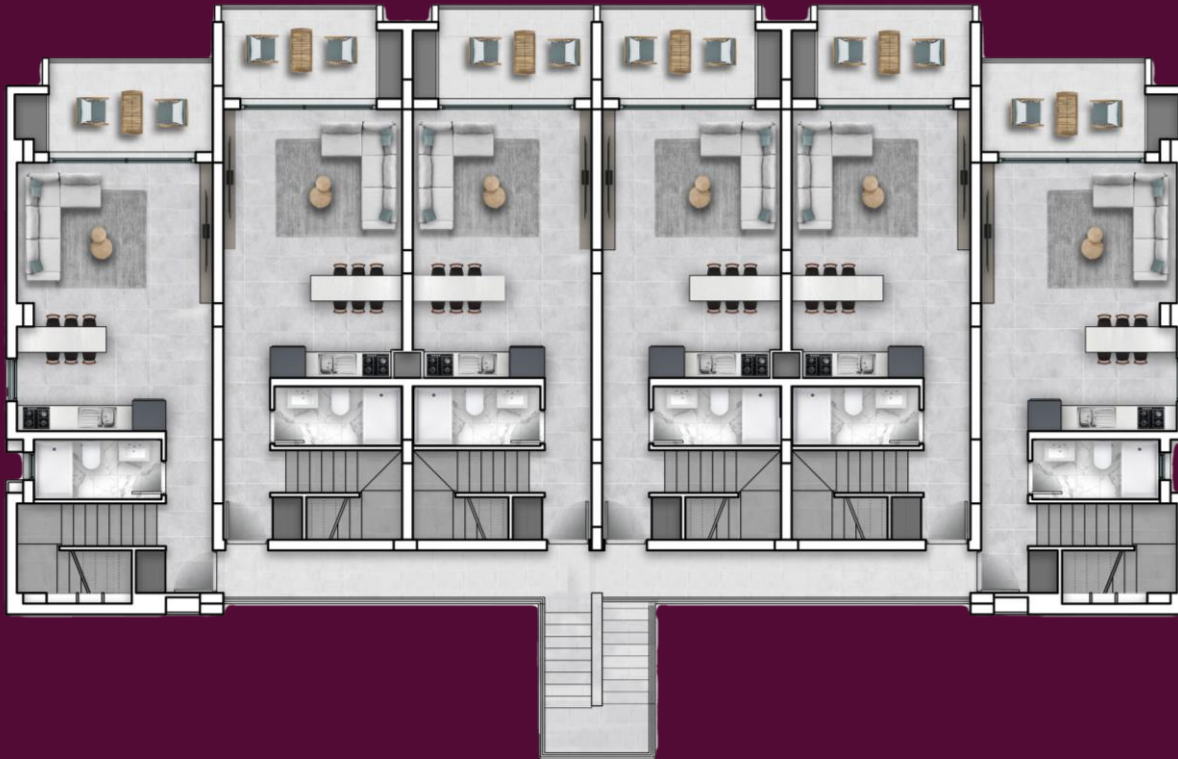
All Pre-Planning Information provided in this document is subject to change and developer has the right to make any alterations / cancellations at the planning phase.



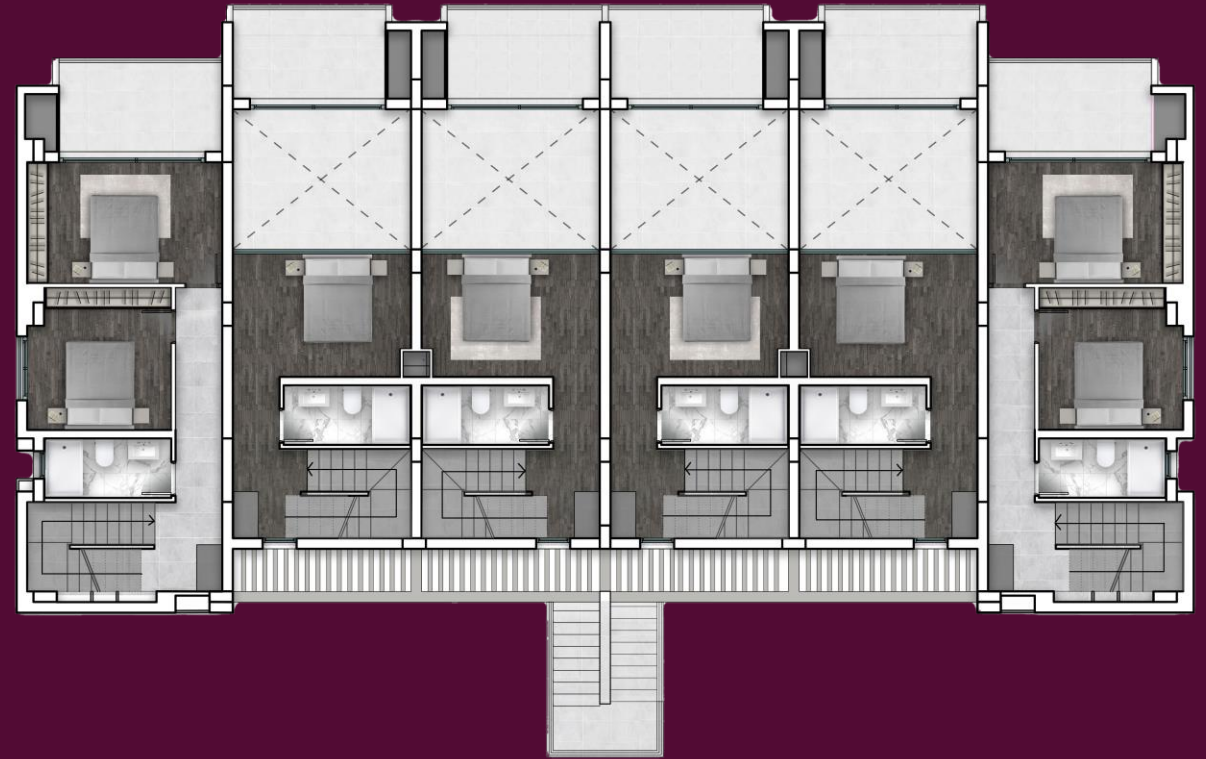
# D & E-Block

## 2 Bedroom Duplex Penthouse

First floor



Gallery floor



100 m<sup>2</sup> closed area | 8 m<sup>2</sup> terrace | 36 m<sup>2</sup> roof terrace | 144 m<sup>2</sup> total living space

All Pre-Planning Information provided in this document is subject to change and developer has the right to make any alterations / cancellations at the planning phase.



# E-Block

## 1 Bedroom & 2 Bedroom Duplex Penthouse

36 m<sup>2</sup> Rooftop Terrace with splendid views - Water & electric connections included



All Pre-Planning Information provided in this document is subject to change and developer has the right to make any alterations / cancellations at the planning phase.



# C-Block

2 Bedroom Garden

3 Bedroom Duplex Penthouse





# C-Block

## 2 Bedroom Garden



82 m<sup>2</sup> covered area | 18 m<sup>2</sup> terrace | 100 m<sup>2</sup> total living space



# C-Block

## 2 Bedroom Garden



82 m<sup>2</sup> covered area | 18 m<sup>2</sup> terrace | 100 m<sup>2</sup> total living space

All Pre-Planning Information provided in this document is subject to change and developer has the right to make any alterations / cancellations at the planning phase.



# C-Block

## 2 Bedroom Garden



82 m<sup>2</sup> covered area | 18 m<sup>2</sup> terrace | 100 m<sup>2</sup> total living space

All Pre-Planning Information provided in this document is subject to change and developer has the right to make any alterations / cancellations at the planning phase.



# C-Block

## 3 Bedroom Duplex Penthouse



105 m<sup>2</sup> covered area | 15 m<sup>2</sup> balcony | 90 m<sup>2</sup> roof terrace | 210 m<sup>2</sup> total living space



# C-Block

## 3 Bedroom Duplex Penthouse

C-Block First Floor



C-Block Gallery Floor



105 m<sup>2</sup> covered area | 15 m<sup>2</sup> balcony | 90 m<sup>2</sup> roof terrace | 210 m<sup>2</sup> total living space

All Pre-Planning Information provided in this document is subject to change and developer has the right to make any alterations / cancellations at the planning phase.



# C-Block

## 3 Bedroom Duplex Penthouse



105 m<sup>2</sup> covered area | 15 m<sup>2</sup> balcony | 90 m<sup>2</sup> roof terrace | 210 m<sup>2</sup> total living space

All Pre-Planning Information provided in this document is subject to change and developer has the right to make any alterations / cancellations at the planning phase.



# C-Block

## 3 Bedroom Duplex Penthouse

90 m<sup>2</sup> Rooftop Terrace with splendid views - Water & electric connections included





# Bungalows





# B-Block

## 3 Bedroom Bungalow



125 m<sup>2</sup> covered area | 50 m<sup>2</sup> garden terrace | 120 m<sup>2</sup> roof terrace | 295 m<sup>2</sup> total living space

Optional with private Pool (extra cost)



# B-Block

## 3 Bedroom Bungalow



Bungalow Ground Floor



Bungalow Roof Terrace



125 m<sup>2</sup> covered area | 50 m<sup>2</sup> garden terrace | 120 m<sup>2</sup> roof terrace | 295 m<sup>2</sup> total living space | Optional with private Pool (extra cost)

All Pre-Planning Information provided in this document is subject to change and developer has the right to make any alterations / cancellations at the planning phase.





# INTEREST-FREE INSTALLMENT\* PAYMENT PLAN (\*Monthly / 1 in 3 Months / 1 in 6 Months)

35% Down Payment

65% Balance

36 Months interest-free payment  
plan

## The Buying Process

1. Book your property for just £2,000 / £5,000
2. Sign power of attorney with a lawyer and share information about your purchase
3. Signing a contract
4. Flexible payment plan (monthly, quarterly or by construction phase)



Welcome to your new home in the mediterranean.





# HABITAT

YOUR HOLISTIC PARADISE

Wellness ♦ Anti-Ageing ♦ Conventions